



Imperial College

OF SCIENCE, TECHNOLOGY AND MEDICINE

Division of Neuroscience and Psychological Medicine
Faculty of Medicine, Charing Cross Campus

History of the Department

The Department of Neuropathology at Imperial College was established in January 2000.

One of its foundations is the very influential research tradition of the laboratories of Walther Spielmeier and Alois Alzheimer (1). This tradition ended in Munich, Germany, with the retirement of Professor Georg Kreutzberg and the closure of his Department of Neuromorphology at the Max-Planck-Institute of Neurobiology.

(1) Brain Pathology 9: 237-240(1999)

The Department of Neuropathology at Imperial College houses Walther Spielmeier's desk and cupboard



Walther Spielmeier, 1879-1935



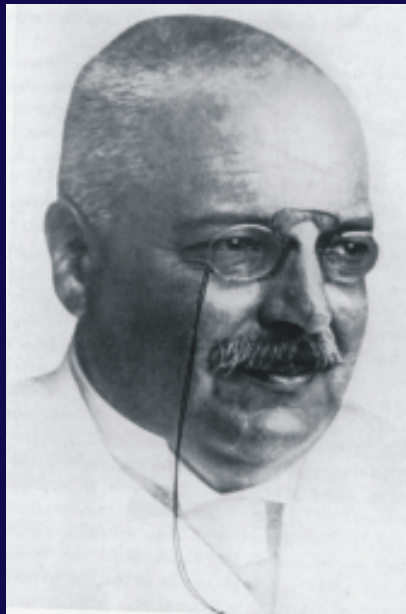
Spielmeier, who trained 180 neuropathologists from 25 different countries (Brain Pathol 1:60-2, 1990) had a tremendous influence on the development of this specialty.



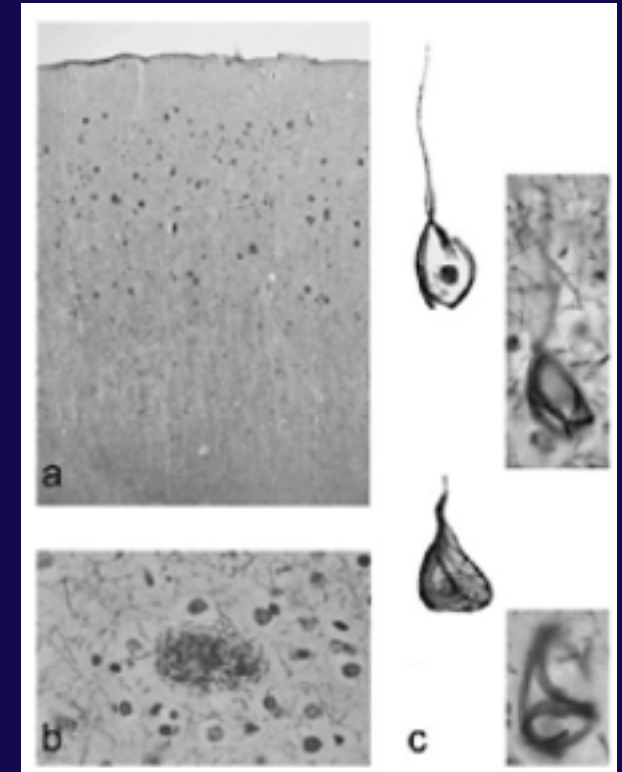
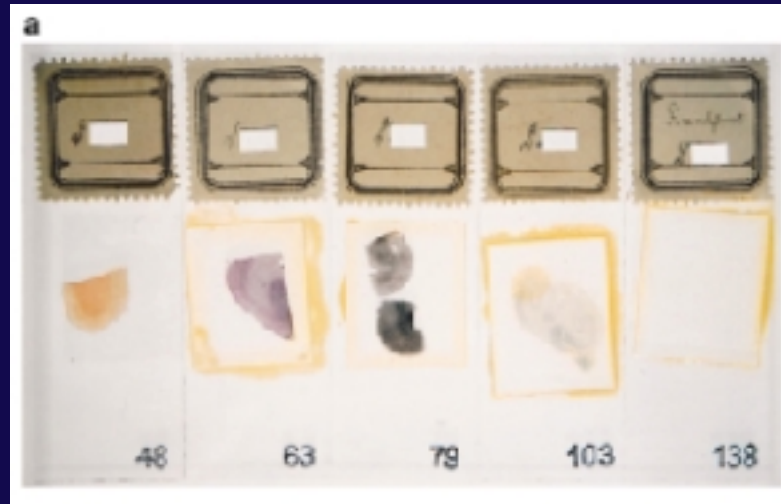
Spielmeyer's Laboratory



The Department of Neuropathology at Imperial College is also in the possession of



Alois Alzheimer, 1864-1915



histological material from Alois Alzheimer's own research, notably from the first two cases of Alzheimer's disease, which Alzheimer reported in 1907 and 1911, respectively.

For more information see <ftp://ftp.cc.ic.ac.uk/pub/depts/neuropat/AD/>

Alzheimer's Laboratory

